

## STAMBENI OBJEKAT

sprat  
floor **Pk**

stan  
unit **50**

Četvorosoban  
Fourbedroom

1. Ulazni hodnik/ Entrance hall	9,42 m <sup>2</sup>
2. Kuhinja/ Kitchen	3,96 m <sup>2</sup>
3. Toalet/ Toilet	2,00 m <sup>2</sup>
4. Dnevna soba sa trpezarijom/ Living room with dining	19,96 m <sup>2</sup>
5. Terasa/ Terrace	1,96 m <sup>2</sup>
6. Ostava/ Storage	2,30 m <sup>2</sup>
7. Soba/ Bedroom	8,06 m <sup>2</sup>
8. Soba/ Bedroom	7,80 m <sup>2</sup>
9. Soba/ Bedroom	11,51 m <sup>2</sup>
10. Toalet/ Toilet	4,83 m <sup>2</sup>

**UKUPNA POVRŠINA/ TOTAL AREA** 71,81 m<sup>2</sup>

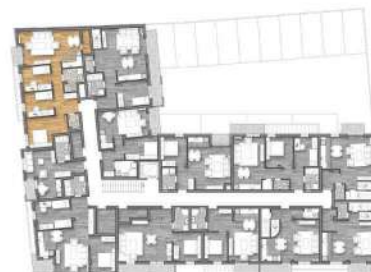
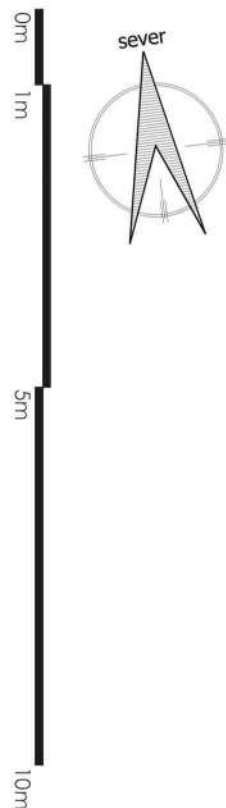
**UMANJENA POVRŠINA/ REDUCED AREA** 69,65 m<sup>2</sup>



slobodno  
available

rezervisano  
reserved

prodato  
sold



Napomena: Svi materijali, dimenzije i crteži su okvirni. Kalkulacija površina unutrašnjeg i spoljašnjeg prostora uređena je u skladu sa važećim standardom (SRPS U. C2. 100:2002) i predstavlja projektovanu neto površinu stambene jedinice.

Disclaimer: All materials, dimensions and drawings are approximate. Calculation of internal and external area is fully compliant with local standards (SRPS U. C2.100:2002) and as such it represents the net area of the unit.